

ONGOING PROJECTS



Project title

Strengthening capacities and market opportunities for locally promising energy-saving stoves and quality tree saplings in Delta, Myanmar.(2011-2014)

Location

(119) villages in Bogalay & Mawlamyainggyun Tsp. Ayeyarwady Delta.

Donor

Livelihood Thrust Fund (LIFT)



Project title

Environmental Conservation Program (Mangrove Forest Restoration and Protection) in Kyaukpyu Township.(2011-2014)

Location

Kyaukpyu Tsp. Rakhine State.

Donor

Environmental Protection Program. SHWE (Daewoo Int. Corporation)



MANGROVE SERVICE NETWORK (MSN)



Project title

Community Based Sustainable Use of Natural Resources and Environment Protection in the Ayeyarwady Delta, Myanmar.(2012-2015)

Location

(54) villages in Bogalay & Pyapon Tsp.

Donor

Non State Actor Development Program. European Commission (EC).



MANGROVE SERVICE NETWORK(MSN)
 101, building (B), 2nd floor
 Highway complex housing estate
 Yuzana Lane, Hantharwaddy Road,
 Kamaryut Township in Yangon.
 Phone: +959 7321 3356.
<http://www.mangroveservicenet.org>



Background of MSN

Mangrove Service Network (MSN) was formed as a non-profit partnership firm under Partnership Act (1932) in December 2001 with Myanmar professionals who are well experienced in the environmental conservation and community development projects in Myanmar.

MSN was registered as a non-governmental organization (Non – profit , NGO) under local organization law 1988 at Ministry of Home Affair on 14 March 2011.

Goal

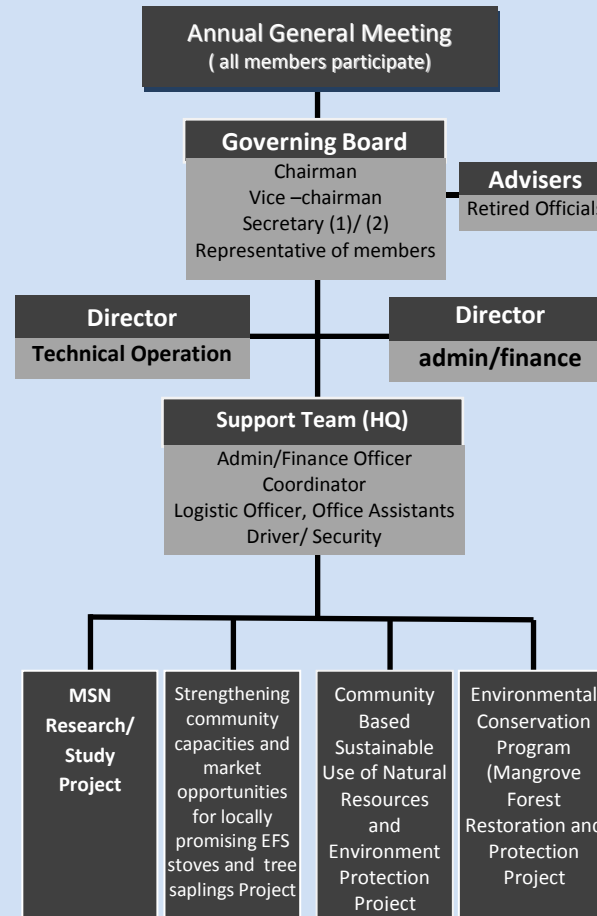
To promote capacity of rural communities in Myanmar in environmental conservation and production of livelihood supplies through provision of training courses and delivery of inputs.

Objectives

- 1.To dedicate in the environmental conservation through community participation not only in the mangrove forest area but also in other possible areas as well;
- 2.To render service for community development in the fields of agriculture, fisheries, livestock, cottage industry, gender development and rural infrastructures;
- 3.To promote the capacity of the rural community through training, workshops and Information, Education, Communication (IEC) materials;
- 4.To work for the development of grass root community by organizing funds and services from external sources and donors interested in people-centered approach in poverty alleviation.



Organizational Chart of Mangrove Service Network (MSN)



Field of Activities

- Promote environmental conservation through community based production and popularization of fuel wood efficient stoves, establishment of nurseries, tree plantings, soil conservation, riverbank stabilization, etc.
- Provide technical assistance to promote local capacity for self-reliance in the fields of forestry, agriculture, fishery, livestock and cottage industry;
- Promote awareness, exchange of information and networking through trainings, study tours, workshops, contests, IEC materials etc., to build up the capacity of community-based organizations;
- Formation of community-based organization committees for Environmental conservation, Income Generation and Communal Development activities and facilitate in drafting rules & regulations and village action plans;
- Socio-economic surveys, Based line data collection, participatory monitoring and evaluation for community development;
- Render services in the field of rural infrastructure development activities and resource centers for participatory technological development (PTD) trials.
- Provide Services for Emergency support to Natural Disaster victims.

